

Housing : Housings are of heavy heavy-duty zinc alloy and have M20X1.5mm conduit entry. Two types of base plates are provided. So that each switch is suitable for either side mounting or base mounting.

Actuator : Plain spring plunger protected by cowl.

Terminal : Three M3 screws with washers.

Overall width: Side mounting Switch – 27.1mm.
Base mounting Switch – 44.6mm. with flanged base plate.

Technical specifications :

Actuating Force (Max.) : 737 gms.
Release Force (Min.) : 170 gms.
Pretravel (Max.) : 1.4 mm.
Movement Differential(Max.) : 0.08 mm.
Overtravel : 4.6 mm
Mechanism : Single-pole, changeover.

Electrical Ratings

AC (Resistive) : 15A, 125V or 15A, 250V
AC (Inductive) : 5A, 125V or 5A, 250V
DC (Resistive) : 0.5A, 125V or 0.25A, 250V
DC (Inductive) : 0.03A, 125V or 0.02A, 250V

Technical Data

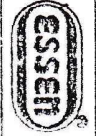
Contact resistance : 10 milliohms (max.)
Insulation resistance : 1000 megohms (min.)
Voltage proof : 1 KV AC for one minute
Terminals : Three M3 screws and washers
Electrical life : 50,000 operations
Mechanical life : 1 million operations.

CAT. NO.	
MS7/1BM	WITH BASE MOUNTING
MS7/1SM	WITH SIDE MOUNTING
MS7/1M	WITH BOTH MOUNTINGS

ISS. DATE	18.07.12	DESIGNER	DR. V. S. RAMAN	SIGN.
DATE		MODIFICATION		SIGN.
DIMENSIONS IN MM				
DESIGN	18.07.12	DATE		SIGN.
DRAWN	18.07.12			
CHKD.				
APPD.				

TOLEANCES UNLESS OTHERWISE SPECIFIED
±0.1

METAL - HOUSED MICRO SWITCH WITH PLAIN SPRING PLUNGER "S" - SERIES"



ESSEN DENKI, 22, INDUSTRIAL AREA, PHASE II, CHANGANASARI - 160 002.

DRG. NO. MBGU-113 AS
SHEET 1 OF 1